

**OFFICIAL COORDINATION REQUEST FOR  
NON-ROUTINE OPERATIONS AND MAINTENANCE**

**COORDINATION TITLE-** 16 LWG 08 Lower Granite Unit 6 Baseline and EAL Performance Testing

**COORDINATION DATE-** 29 June 2016

**PROJECT-** Lower Granite Dam

**RESPONSE DATE-** 8 July 16

**Description of the problem:** Operation of unit 6 for about 1 hour on five consecutive days to collect baseline information on petroleum grease is required prior to EAL (Environmentally Acceptable Lubricants) application. The suggested time of operation is one hour between 1600 and 1800 hours July 11-15. During this specific timeframe BPA will be able to support operation of unit 6 and unit 2 for one hour baseline data collection.

**Type of outage required:** No outage is required.

**Impact on facility operation:** The required operation of unit 6 prior to unit 3 will be a one hour deviation from unit priority order on five consecutive days.

**Dates of impacts/repairs:** Unit 6 will be operated for one hour July 11-15.

**Length of time for repairs:** Collection of baseline information will require operating of unit 6 for one hour each of the five days. Unit 2 will remain in service.

**Expected impacts on fish passage:** Unit 6 operation outside priority order may impact adult passage, including sockeye, due to changes in tailwater hydraulic conditions. Operation of unit 2 concurrent with operation of unit 6 during baseline data collection has been coordinated with BPA to minimize the potential impacts to fish passage. The ten year average adult fish passage counts at Lower Granite for the proposed five days (July 11-15) of testing are about 190 chinook, 130 jack chinook, 93 steelhead, and 43 sockeye.

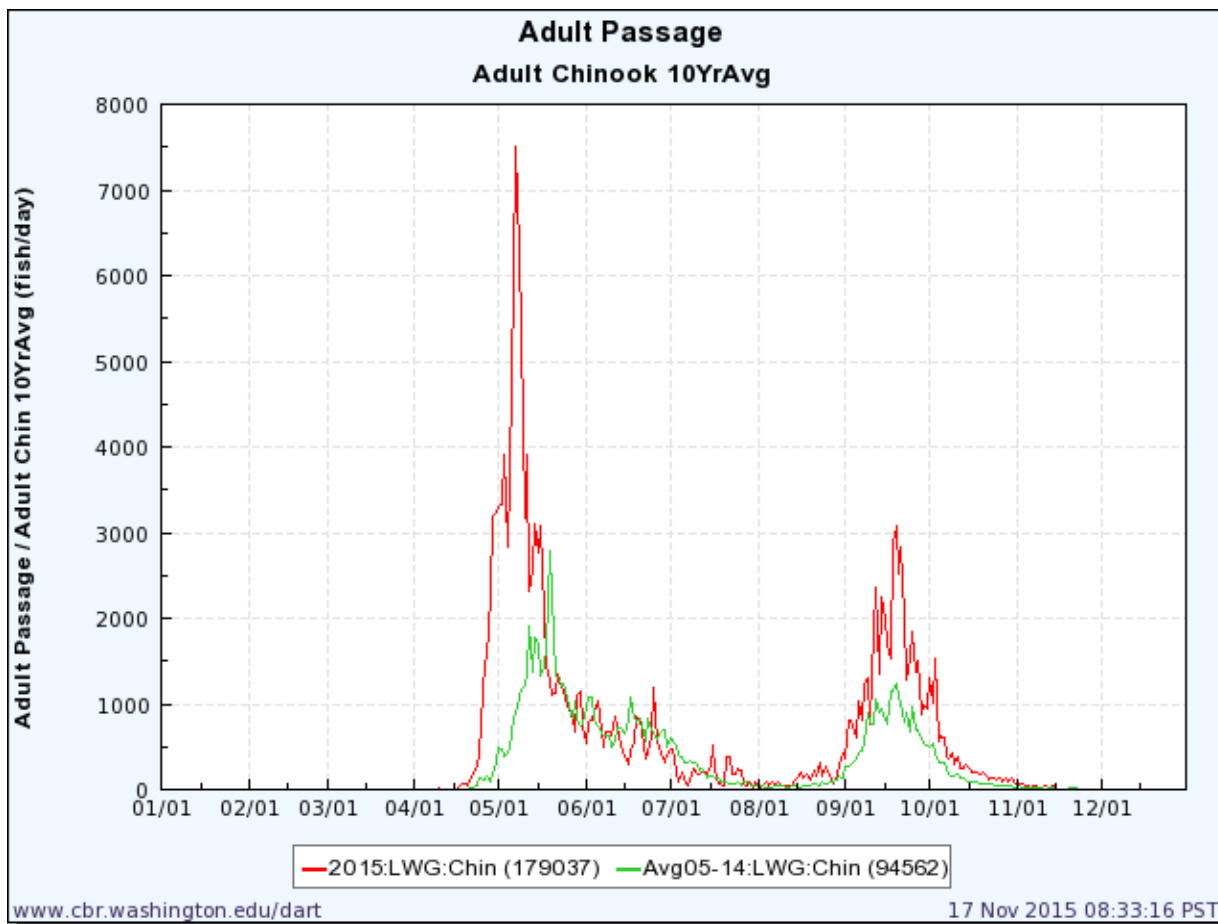
**Comments from agencies**

**Final results**

Please email or call with questions or concerns.

Thank you,

Elizabeth Holdren  
Supervisory Fisheries Biologist  
Lower Granite Lock and Dam  
Ph. 1(509) 843-1493 ext.263  
Cell. 1(509) 592-6109  
[Elizabeth.a.holdren@usace.army.mil](mailto:Elizabeth.a.holdren@usace.army.mil)



**Figure 1. 2015 and 10 year average Chinook passage at Lower Granite.**

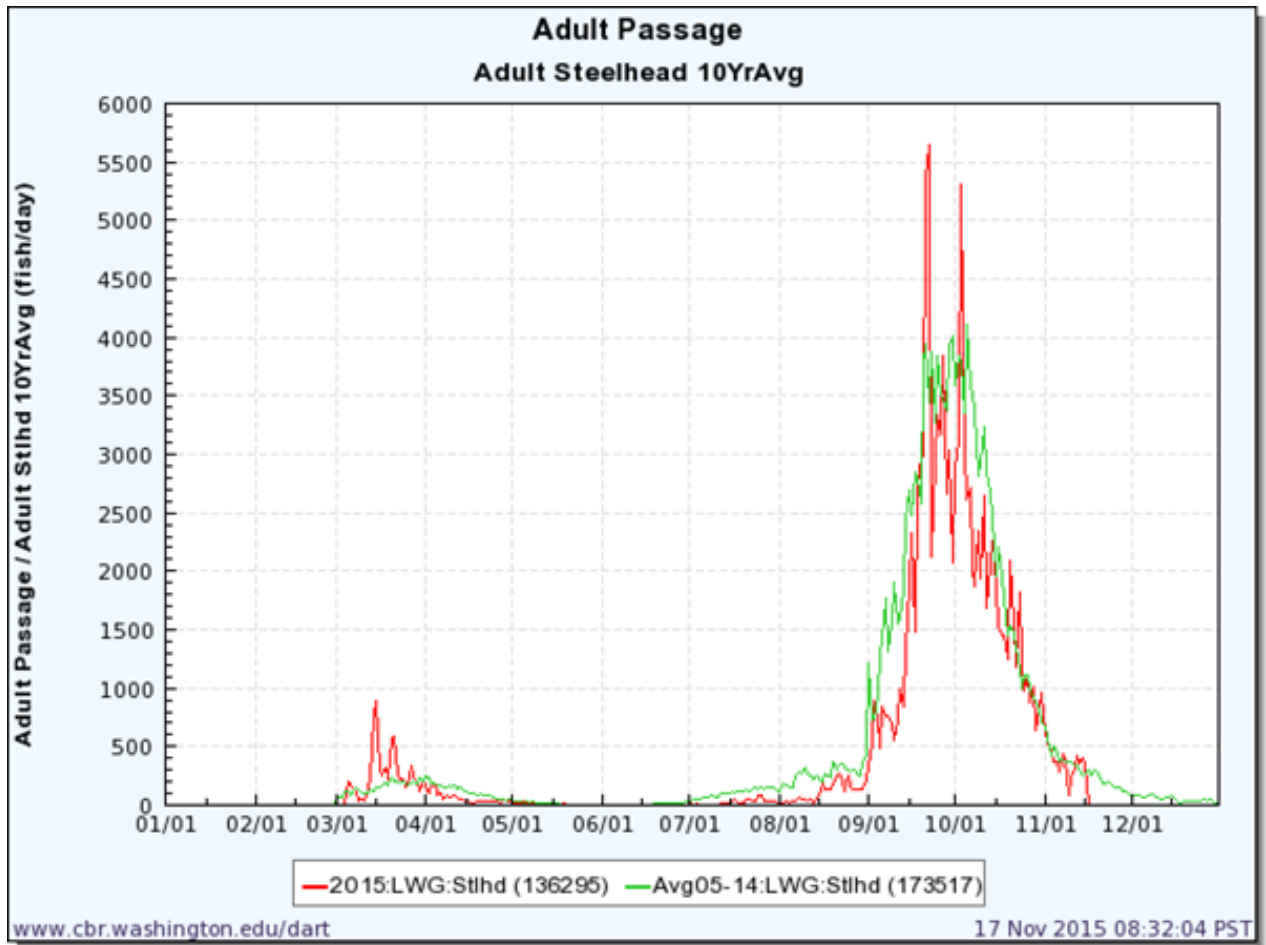
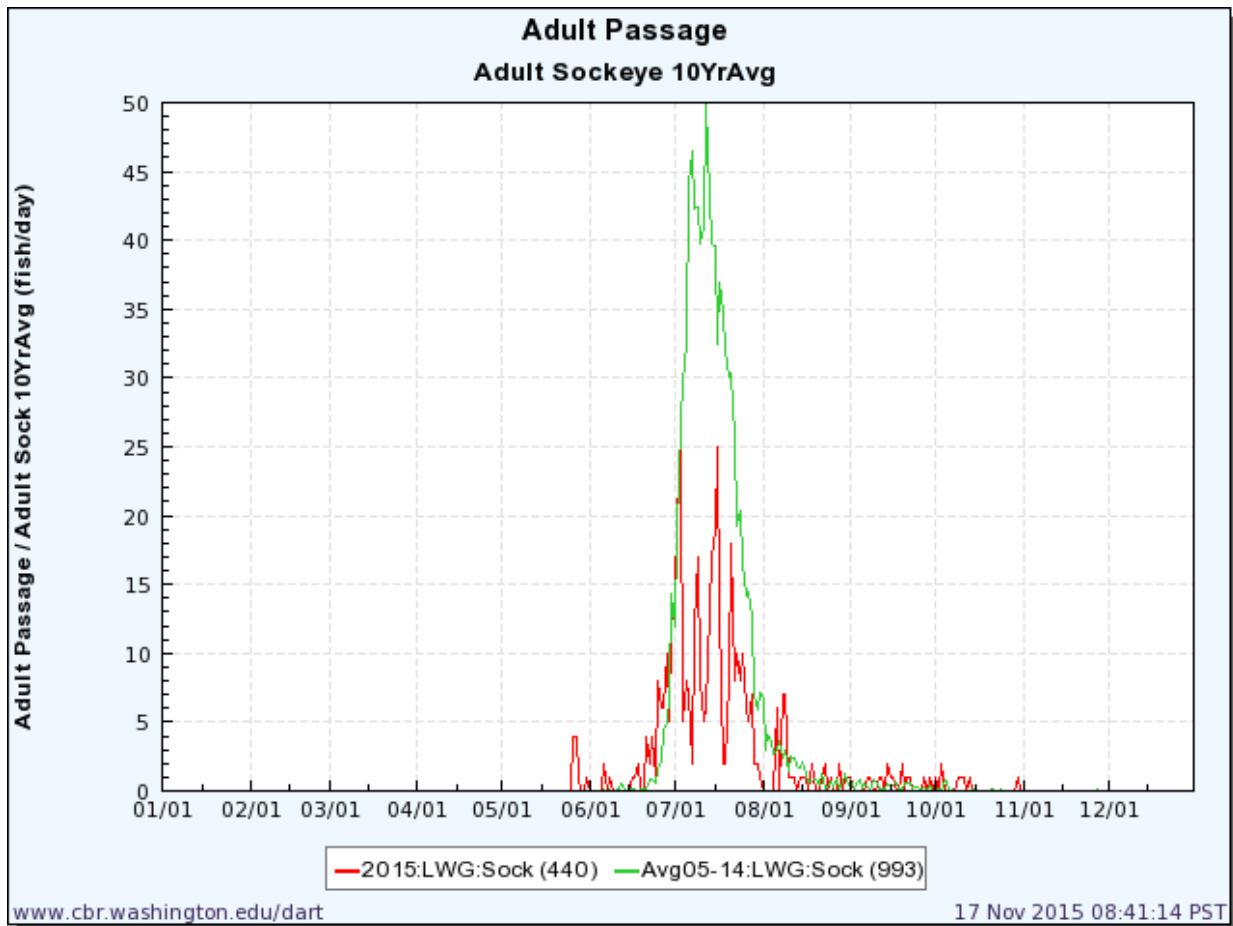
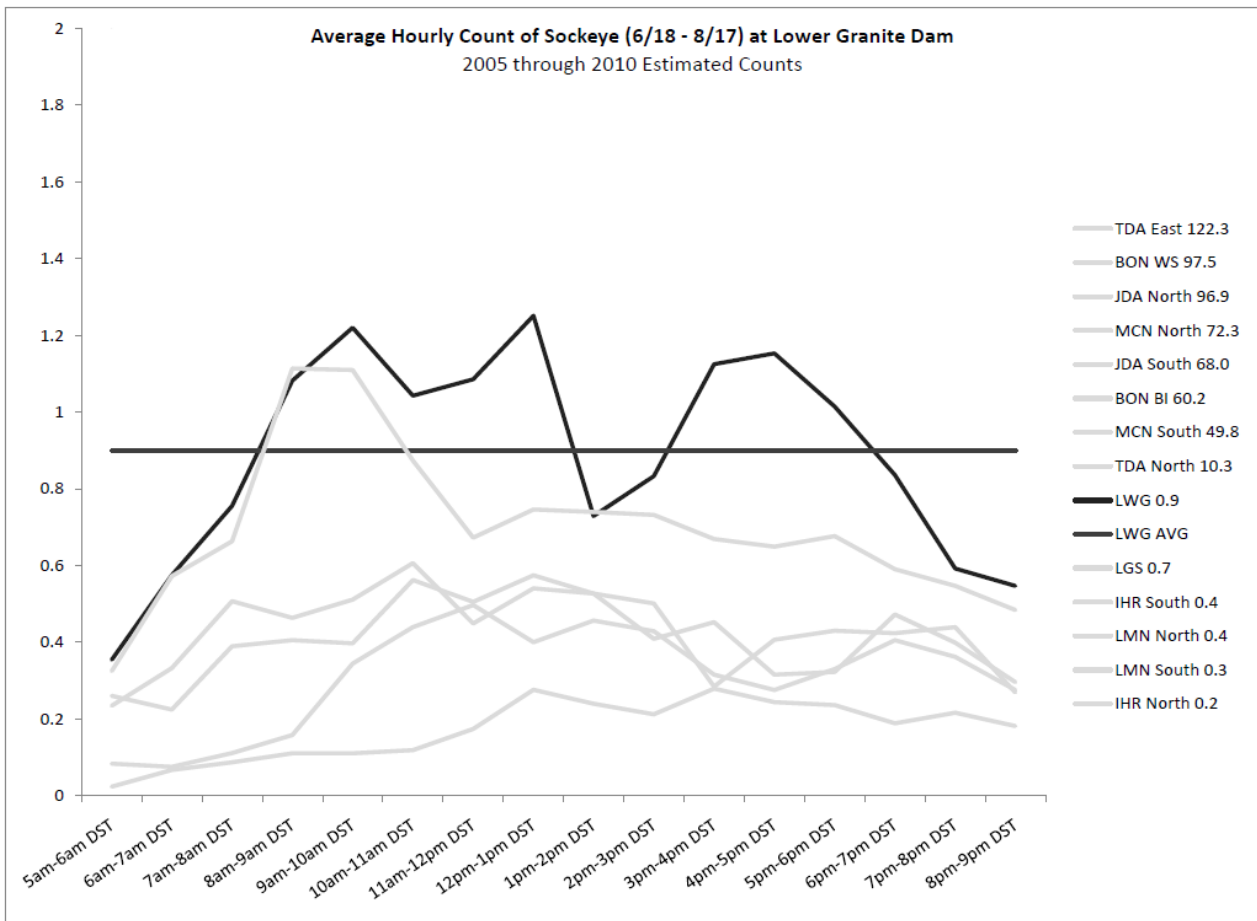


Figure 2. 2015 and 10 year average steelhead passage at Lower Granite Dam.



**Figure 3. 2015 and 10 year average Sockeye passage at Lower Granite Dam**



**Figure 5. 2005-2010 Sockeye diel passage times at Lower Granite Dam**